



In the woods, we return
to reason and faith.

~Ralph Waldo Emerson



Buy  Green

A breath of woodland lure.



2019 Edition

The Journey of a Tree



We are left in awe by the nobility of a tree; its eternal patience, its suffering caused by man and sometimes by nature. And still the tree does not wither and die, but rebounds and gives us interesting art to enjoy: for example, the birdseye maple or spalted sycamore. With its prodigious ability to serve, it produces bountiful oxygen while absorbing gases harmful to other living things. Its fruits feed us. And finally, when time and weather bring it down, its body offers timber for our houses and boards for our furniture. The tree leaves a wonderful heritage.



When trees mature, it is fair and moral to cut and use them. Some trees need to be removed when becoming a danger to man or property, or to give smaller trees light and space to grow. Claiming dead



wood makes room for healthy vegetation, and the trees we use come from areas where they must be removed. Wood is a truly sustainable resource.

Woodland Heritage Furniture
2200 Noble Road, Kirkwood, PA 17536
p. 717.529.1999

Some trees will never amount to more than firewood. Others will serve kings. The cutting of a tree needs to be done very carefully so as not to smash or split the trunk on impact.

The sawing of logs is of prime importance. Each cut requires judgment as to what the log should become. As in cutting a diamond, if a figure is cut properly, the beauty locked in the wood will gradually emerge. If cut improperly, most of that beauty is lost.



At Woodland Heritage Furniture, we cure our own lumber for quality control, generally air drying one year for each inch of the material's thickness. The wood is then kilned to extract the last of the moisture. When wood relaxes from tension and moisture, it sometimes will crack creating a disaster. Being the "Masters of Disaster," we will inlay a butterfly to stabilize the wood and add an artful touch. If done correctly, the artwork of nature can be revealed by craftsmanship.



The Making of Art

Selection of the wood is of key importance to a balanced finished object. Many aspects must be considered such as differentiation in color, quality of figure or curl, spirit of the form, and shape, dimension, size, and weight. All of these go into the equation when considering what sort of object a piece of wood will become.

We begin by choosing the top. Next we choose the support for the top. The base must be visually light enough to keep the top floating in space, and must be physically heavy enough to provide a strong support for the top that will last generations. Sometimes other elements of nature are brought into play, such as embedded stone or inlaid glass. Everyone can benefit from the beauty of nature right in their living room.



**One touch of nature makes
the whole world kin.**

~William Shakespeare

The Preservation of Live Art

Finally, when an object has become an art form, there is a need to enhance and preserve it. Generally, two coats of lacquer will be sufficient. Sometimes we choose to use oil instead. Three or four coats of linseed oil will be sufficient. Your furniture can be refinished periodically: just buff it with very fine steel wool, and polish it with a little oil. When your student does his or her homework on these tables and leaves an indentation, another piece of history has been added to it. If accidents occur and there is an unwanted dent on the surface, simply polish with very fine steel wool and soak a moist cotton ball on the dent overnight. Buff it with very fine steel wool again, and apply a liberal amount of oil on the surface. Then you have a nice new finish. To connect with the soul of a tree and experience what nature can do for you, just call and ask for more information.



Base Options

Mix and Match Tops with Bases

Customize your furniture with the base of your choice. See chart below for availability of each base style.

Base Item Number	Description	Availability (see pages referenced for example)				
		Dining Tables	Coffee Tables	End Tables	Desks	Console Tables
Alo-W	Aloof	p. 10, p. 11	p. 23	p. 22	p. 32	p. 32 (as desk)
ALP-W	Aloof Pedestal	- N / A -	p. 23	p. 28	- N / A -	- N / A -
ALP-R	Aloof Rounds	- N / A -	p. 23	- N / A -	- N / A -	- N / A -
Bel-Ch	Belted Chrome	p. 10	- Not Shown -	- Not Shown -	p. 10 (as dining table)	- Not Shown -
Can-B	Cantilevered	p. 7	- N / A -	- N / A -	- N / A -	- N / A -
Dwf-W	Double Waterfall	- N / A -	p. 14	p. 27	- Not Shown -	- Not Shown -
FL-W	Floating	- N / A -	p. 15	p. 25	- N / A -	- N / A -
Hap-B	Hairpin Black	- N / A -	p. 20	p. 26	- Not Shown -	p. 35
Hap-S	Hairpin Stainless	- N / A -	p. 20	p. 26	- Not Shown -	p. 35
Ind-B	Industrial	- N / A -	- N / A -	p. 28	- N / A -	- N / A -
MB-B	Metal Band - Black	p. 9	p. 21	p. 26	p.31	p. 31 (as desk)
MB-MBS-B	Metal Band/Shelf	- N / A -	- Not Shown -	- Not Shown -	p. 30, p. 32	p. 34
Mod-W	Modern	- N / A -	p. 19	- Not Shown -	- Not Shown -	- Not Shown -
NT-Sub	Nature's Touch/Suburban	- N / A -	p. 16, p.18	- N / A -	- N / A -	- N / A -
NT-W	Nature's Touch	p. 8	- N / A -	- N / A -	- Not Shown -	- Not Shown -
Ped-B	Pedate	- N / A -	p. 16	- N / A -	- N / A -	- N / A -
Ped-W	Pedestal	- N / A -	- N / A -	p. 28	- N / A -	- N / A -
Per-M	Perpetual	- N / A -	p. 15	- N / A -	- N / A -	- Not Shown -
SL-M	Slab Leg	p. 7	- Not Shown -	- Not Shown -	- Not Shown -	- Not Shown -
ST-CE	Stump	p. 8	- N / A -	- N / A -	- N / A -	- N / A -
Sub-M	Suburban	- Not Shown -	- Not Shown -	- Not Shown -	p. 29	p. 29 (as desk)
Tre-C	Trestle	p. 9	- Not Shown -	- N / A -	- Not Shown -	- Not Shown -
Wf-A-W	Waterfall/Aloof	- N / A -	p. 22	- N / A -	- Not Shown -	- Not Shown -
Wf-MB-B	Waterfall/Metal Band	- N / A -	p. 21	p. 28	p. 31	p. 31 (as desk)
Wf-MBS-B	Waterfall/Metal Band Shelf	- N / A -	- N / A -	- N / A -	p. 30	- N / A -
Wf-NT	Waterfall/Nature's Touch	- N / A -	p. 18	- N / A -	- N / A -	- N / A -
Wf-S-W	Waterfall/Slab	- N / A -	p. 17, p. 23	- N / A -	- Not Shown -	- Not Shown -
Wf-Sub-M	Waterfall/Suburban	- N / A -	- Not Shown -	p. 27	p. 29	p. 29 (as desk)

Color Options for Metal Bases

Black Metal - B



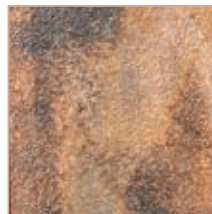
Chrome - CH



Stainless Steel - SS



Copper - COP



If you need colors or finishes, please contact:

Woodland Heritage Furniture

2200 Noble Road
Kirkwood, PA 17536

p. 717.529.1999

ask for Jonas

Many base options available for each top. Please see chart on page 6 for availability.



Base Can-B



#50 Cantilevered Dining Table

Shown in Crotch Black Walnut with Black Metal | 30"w x 84"l x 30"h



Base SL-M

Buy  Green

#51 Slab Leg Dining Table

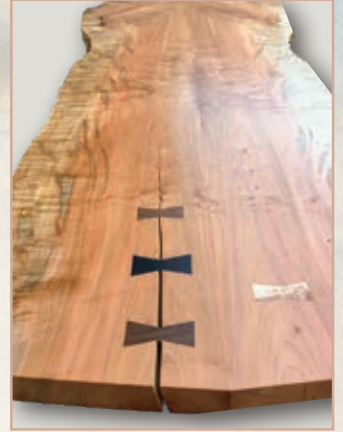
Shown in Crotch Maple | 34"w x 96"l x 30"h





Base ST-CE

Buy  Green



#52 Stump Dining Table

Shown in Curly Maple | 36"w x 96"l x 30"h



Inlaid Glass



Base NT-W

Buy  Green

#53 Nature's Touch Dining Table

Shown in Curly Crotch Maple | 34"w x 96"l x 30"h





Base Tre-C

Buy  Green



#54 Trestle Dining Table

Shown in Crotch Cherry | 36" w x 72" l x 30" h

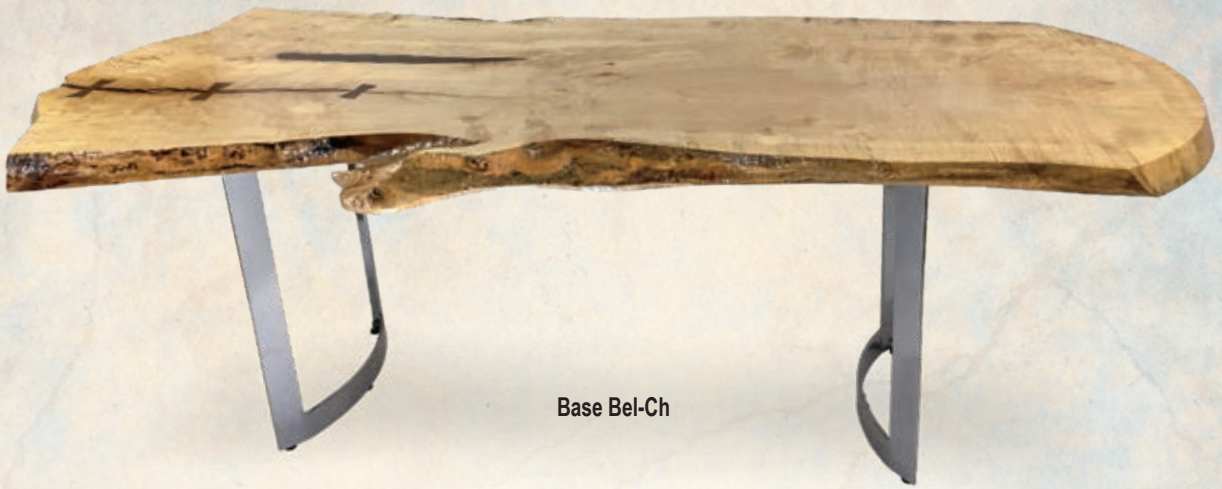


Base MB-B

#55 Metal Band Dining Table

Shown in Black Walnut
with Black Metal | 30" w x 60" l x 30" h





Base Bel-Ch

#56 Belted Dining Table

Shown in Curly Maple with
Chrome Belted Legs | 32" w x 84" l x 30" h



Base Alo-W

#57 Aloof Dining Table

Shown in Curly Maple with
Aloof Legs | 32" w x 84" l x 30" h

Buy  Green



#58 Aloof Dining Table with Lake

Shown in Locust with
Aloof Legs | 40"w x 120"l x 30"h



See page 12 for chair details.



#59 Trestle Dining Table

Shown in Mape with
Trestle Legs | 34"w x 84"l x 30"h

#51 Easy Chair

Shown in Walnut | Call for size







Base Dwf-W

Buy  Green

#101 Waterfall Coffee Table

Shown in Spalted Maple | 28"w x 56"l x 18"h



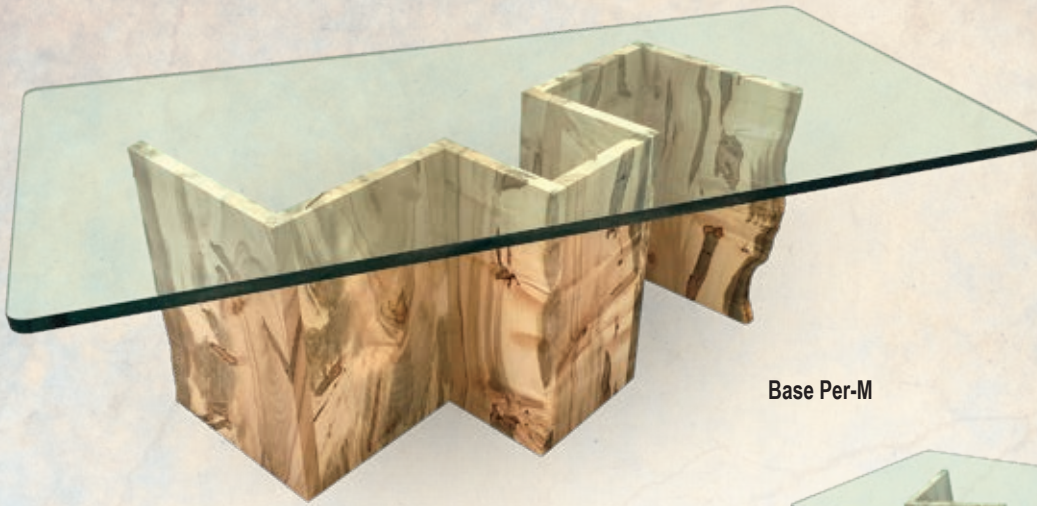
#102 Waterfall Coffee Table

Shown in Elm | 28"w x 56"l x 18"h

Base Dwf-W

Buy  Green





Base Per-M

#103 Perpetual Coffee Table

Shown in Maple

with 3/4" Tempered Glass | 24"w x 40"l x 18"h



Base FL-W

Buy  Green

#104 Floating Coffee Table

Shown in Spalted Maple | 20"w x 52"l x 18"h





Base NT-Sub

Buy  Green



#105 Nature's Touch Coffee Table

Shown in Crotch Maple | 30"w x 36"l x 18"h



Base Ped-B

#106 Pedate Coffee Table

Shown with 3/4" Tempered Glass
and Black Metal Legs | 36"w x 18"h



#107 Waterfall Coffee Table

Shown in Curly Maple | 32"w x 60"l x 18"h



Base Wf-S-W

Buy  Green



Buy  Green

Base Wf-S-W



#108 Waterfall Coffee Table

Shown in Crotch Maple | 34"w x 60"l x 18"h



Base NT-Sub



#109 Nature's Touch Coffee Table

Shown in Crotch English Walnut | 36"w x 60"l x 18"h



Base Wf-NT



#110 Waterfall Coffee Table

Shown in Spalted Maple | 28"w x 52"l x 18"h





Buy  Green

Base Mod-W

#111 Modern Coffee Table

Shown in Crotch Black Walnut | 20"w x 52"l x 18"h



Buy  Green

#112 Coffee Table

Shown in Crotch Black Walnut | 20"w x 36"l x 18"h





Base Hap-S

#113 Hairpin Coffee Table

Shown in Black Walnut with
Stainless Steel Legs | 20"w x 48"l x 18"h



Base Hap-B

#114 Hairpin Coffee Table

Shown in Black Walnut with
Black Metal Legs | 20"w x 54"l x 18"h





#115 Metal Band Coffee Table

Base MB-B

Shown in Elm
with Black Metal | 20"w x 36"l x 18"h



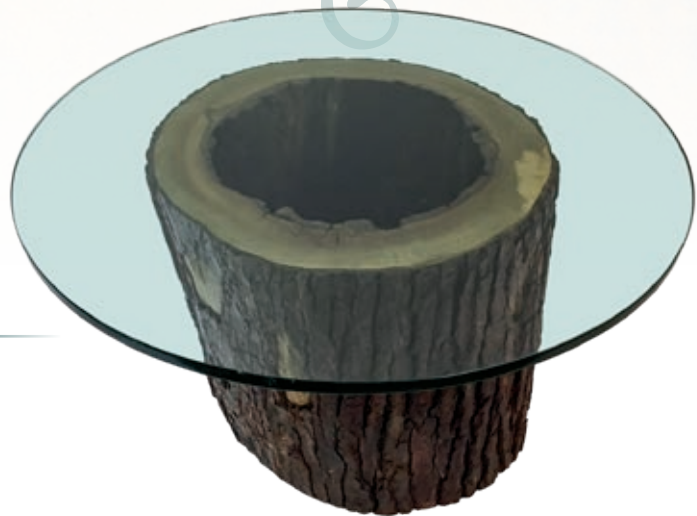
#116 Metal Band Waterfall Coffee Table

Base Wf-MB-B

Shown in Elm
with Black Metal | 24"w x 54"l x 18"h

#117 Heritage Stump Coffee Table

With ¾" Tempered Glass | 30" Round





Base ALP-W

Buy  Green

#118 Aloof Coffee Table

Shown in Black Walnut | 18" w x 48" l x 18" h



Base ALP-W

Buy  Green

#119 Aloof Coffee Table

Shown in Curly Maple | 20" w x 48" l x 18" h



Buy  Green

Base Wf-A-W

#120 Waterfall Aloof Coffee Table

Shown in Ambrosia Maple | 24" w x 48" l x 18" h

Base Wf-S-W

Buy  Green

#121 Waterfall Coffee Table

Shown in Black Walnut | 30"w x 48"l x 18"h



Base ALP-R

Buy  Green

#122 Aloof Pedestal Coffee Table

Shown in Maple | 20"w x 30"l x 18"h



#123 Abstract Pedestal Coffee Tables

Rare find special orders | 18" h



Buy  Green

Base Alo-W



#124 Waterfall Coffee Table

Shown in Maple | 36" w x 42" l x 18" h





#201 Floating End Table

Shown in Curly Black Walnut | 16"w x 24"l x 24"h

Base FL-W

Buy  Green



#202 Floating End Table

Shown in Black Walnut | 16"w x 24"l x 24"h

Base FL-W

Buy  Green



Many base options
available for each top.
Please see chart on page 6
for availability.

#204 Hairpin End Table

Shown in Black Walnut with
Stainless Steel Legs | 18"w x 24"l x 18"h



Base Hap-S



Base Hap-B

#205 Hairpin End Table

Shown in Maple with
Black Metal Legs | 18"w x 24"l x 24"h



#210 Metal Band End Table

Shown in Black Walnut with
Black Metal | 16"w x 24"l x 24"h



Base MB-B



Buy  Green

#203 Waterfall End Table

Shown in Black Walnut | 16"w x 24"l x 24"h



Buy  Green

#206 Double Waterfall End Table

Shown in Black Walnut | 16"w x 24"l x 24"h



#207 Pedestal End Table

Shown in Black Walnut | 16"w x 24"l x 24"h



Base ALP-R

#208 Industrial End Table

Shown in Elm | 18"w x 24"l x 24"h



Base Ind-B



Base Wf-MB-B

#209 Waterfall End Table

Shown in Catalpa | 24"h

Many base options available for each top. Please see chart on page 6 for availability.



Buy  Green

Base Sub-M

#301 Suburban Desk

Shown in English Walnut | 24" w x 60" l x 30" h



Base Wf-Sub-M

Buy  Green



#302 Waterfall Suburban Desk

Shown in Sycamore | 36" w x 60" l x 30" h





Base Wf-MBS-B

#303 Waterfall Desk with Metal Band Shelf Unit

Shown in Quilted Maple
with Black Metal | 30"w x 60"l x 30"h



Base MB-MBS-B

#304 Metal Band Desk with Shelf Unit

Shown in Sycamore
with Black Metal | 20"w x 72"l x 30"h



Base WF-MB-B

#305 Waterfall Desk with Metal Band

Shown in Black Walnut
with Black Metal | 25"w x 60"l x 30"h



Base MB-B

#306 Metal Band Desk

Shown in Black Walnut
with Black Metal | 30"w x 60"l x 30"h





Base MB-MBS-B

#307 Corner Metal Band Desk with Shelf Unit

Shown in Black Walnut with Black Metal | 20"w x 48"l x 30"h
Right Angle 20"w x 36"l x 30"h



Base Alo-W



#308 Aloof Desk

Shown in Ambrosia Maple
with Aloof Legs | 24"w x 60"l x 30"h

#401 Bookshelf

Shown in Maple with Adjustable Shelving – Pins

4 Shelves | 36" w x 16" d x 64" h

3 Shelves | 36" w x 16" d x 47" h

2 Shelves | 36" w x 16" d x 33" h

Custom Sizes Available



#402 Bookshelf

Shown in Maple with Solid Back
Adjustable Shelf Ratchet Strip



Buy  Green



Through Tenons



Adjustable Shelves



Decorative Bow Tie

#403 Étagère

Shown in Maple
with Black Metal | 24"w x 16"l x 36"h



Base MB-MBS-B

#404 Étagère

Shown in Black Walnut
with Black Metal | 16"w x 36"l x 36"h



#601 Heritage Headboard

Shown in Black Walnut,
Queen / Full | 84"w x 48"h



Buy  Green



Base Hap-S

#501 Hairpin Console Table

Shown in Sycamore with
Stainless Steel Legs | 18"w x 48"l x 30"h



#502 Hairpin Console Table

Shown in Sycamore with
Black Metal Legs | 18"w x 48"l x 30"h



Base Hap-B



*Many base options
available for each top.
Please see chart on page 6
for availability.*





Cabinet Bookshelf

Shown in Maple/Walnut | 36"w x 16"d x 60"h



Cantilevered Glass Shelf

Shown in Walnut
with Burl Base | 20"w x 24"l x 48"h
(stump available)



Please call for price on all custom pieces.